



HNRS 3500: Thesis Writing

WITH YOUR FRIENDLY LIBRARIAN,
JESSICA CROSSFIELD MCINTOSH



YOU WILL LEARN

- ✖ About RefWorks
- ✖ How to find your Personal Librarian
- ✖ Getting started with a search strategy
- ✖ How to find resources for your discipline and annotated bibliography
- ✖ Finding your LibGuide



YOU ARE PART OF THE CONVERSATION IN A COMMUNITY OF SCHOLARS

Scholarly Communication:

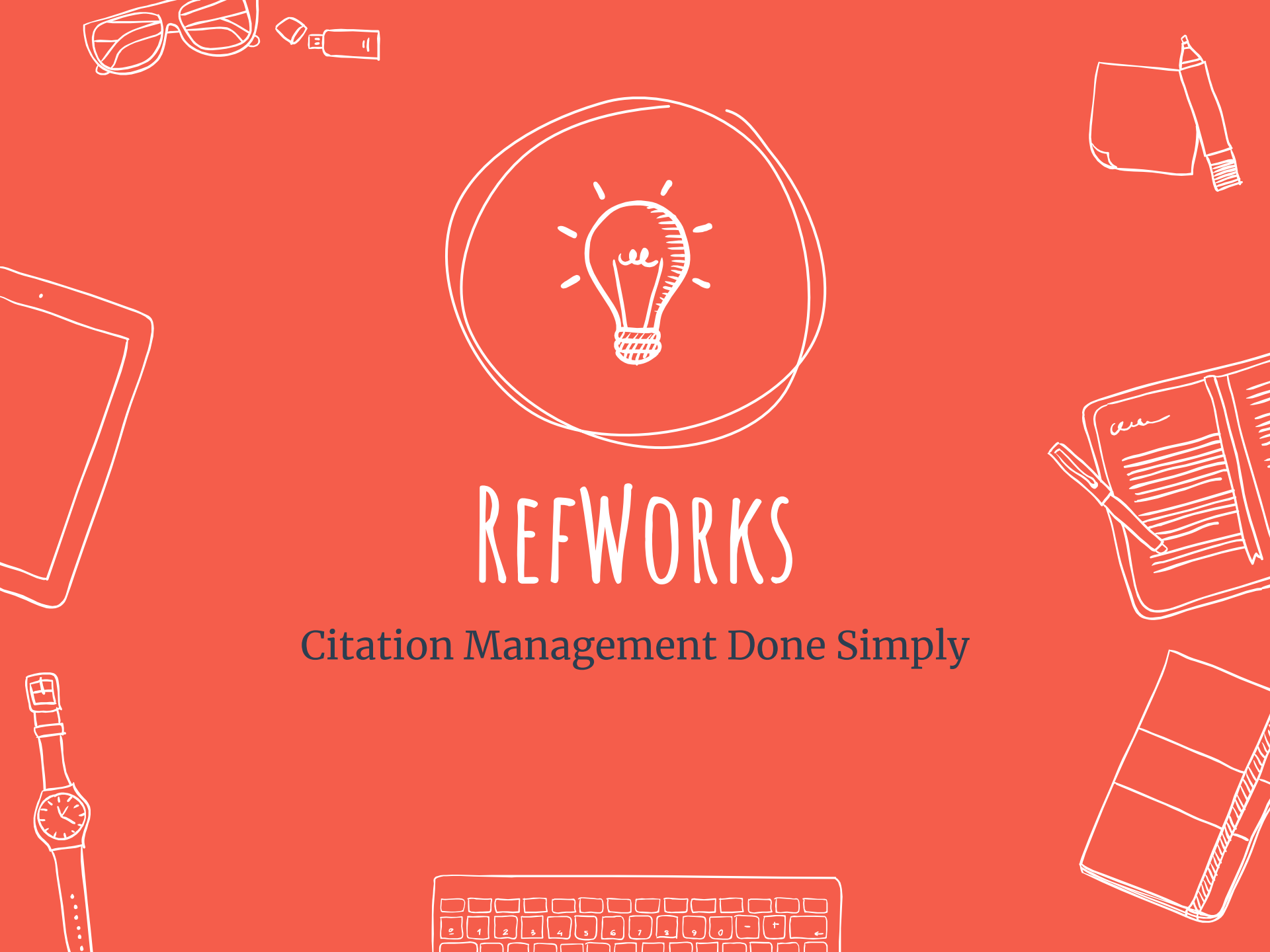
“Sustained discourse within a community of scholars, researchers, or professionals, with new insights and discoveries occurring over time as a result of competing perspectives and interpretations.”

*You are entering the middle of the
conversation, not the end.*



REFWORKS

Citation Management Done Simply





WHAT REFWORKS CAN DO FOR YOU

1. Gather, store, manage, and share references or citations. Access them anytime you have internet available.

2. Generate bibliographies in numerous citation formats such as APA, MLA, Chicago, etc.

3. Use Write-n-cite to help write and organize your paper.

MEET WITH YOUR Personal Librarian





RESEARCH CONSULTATIONS

One-on-one sessions to get assistance with:

- Finding resources for annotated bibliography or literature review
- Refining your search techniques
- Tips for searching specific databases
- Choosing the highest-quality information
- Citations in various formats
- Access to articles you may have trouble finding



FURTHER DEVELOPING YOUR RESEARCH QUESTION

Research Topic

‘Climate change in the United States’

‘Examination of the effect of climate change in national parks in the United States’

‘Examination of the effect of climate change on national parks in California: a comparison of geographical changes since 1990’

Commentary

This sets out your research field but does not frame a research problem because it is too general. You do not have time to study everything about a topic, so you should focus on an aspect that you are interested in.

This is a much better research problem as it gets more specific. However, it is still quite general and could be improved by further focus.

This is better still. It shows the limits of the project. You will be investigating a complex subject, but will be focusing on only one aspect of it. You will make this large subject manageable by focusing on a limited period of time (1990 onwards), and limited sources.



CONSTRUCTING A GOOD SEARCH STRING

- ✘ Determine keywords or “key phrases” from your research question
- ✘ Write down all the synonyms you can think of for each keyword
- ✘ Search 1–3 keywords or phrases per search to keep things broad enough
- ✘ Document your searches (research journal!) so you can remember what combinations you’ve searched in each database



EXAMPLE

‘Examination of the effect of climate change on national parks in the California: a comparison of geographical changes since 1990’

climate

biodiversity

global warming

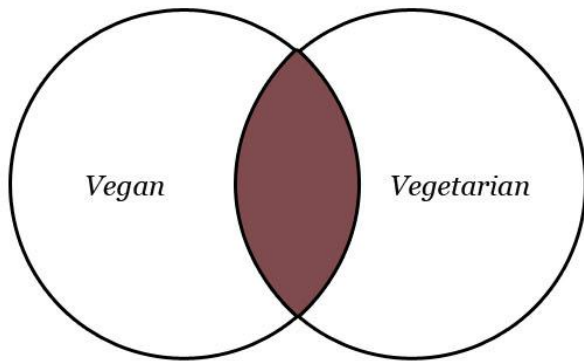
specific park names (Joshua Tree, Yosemite, etc.)

geolog*

earth*

BOOLEAN OPERATORS

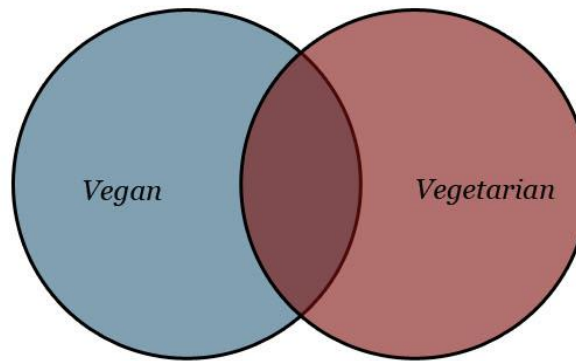
AND



Vegan AND Vegetarian

Using AND, the student can find resources that include information about both vegan and vegetarian diets.

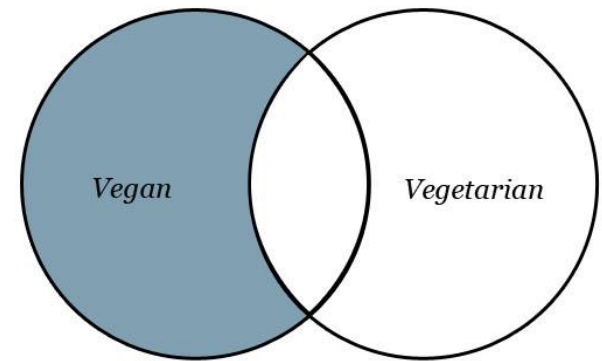
OR



Vegan OR Vegetarian

Using OR, the student can find resources that include information about vegan diets, vegetarian diets, and resources that discuss both.

NOT



Vegan NOT Vegetarian

Using NOT, the student can find resources that only discuss vegan diets.



ACTIVITY

Fill out your topic, synonyms, and search strategy concepts thus far.





ACTIVITY

Take a minute to talk about it with a partner.

What may be difficult about doing this research?

Does your partner have suggestions for search strategies?



STARTING YOUR SEARCH

(GREAT PLACES TO START BUT NOT FINISH)

Wikipedia

1. Can provide good overviews or possible trends/problems
2. Check references

Google/Google Scholar

1. Make sure to link to Otterbein
2. Helpful for introduction to existing research



WEB OF SCIENCE

- ✖ Citation database
- ✖ Diversified scholarly information in the sciences, social sciences, arts and humanities
- ✖ Helpful in understanding the history and progression of research

DATABASES BY SUBJECT

- ✖ Research Databases on website



BUILD YOUR ANNOTATED BIBLIOGRAPHY

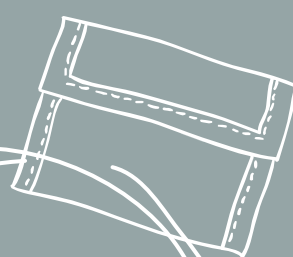
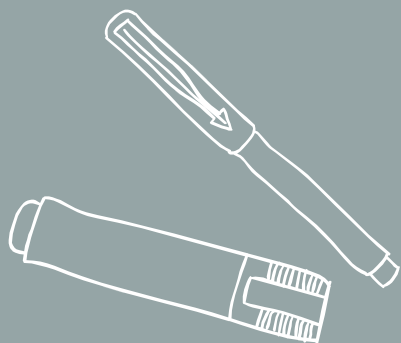
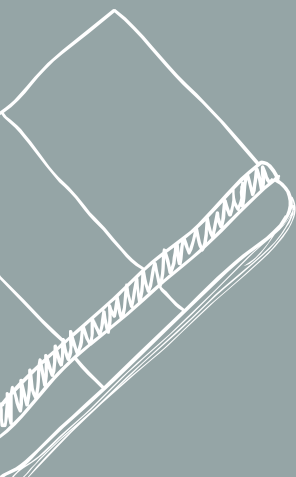
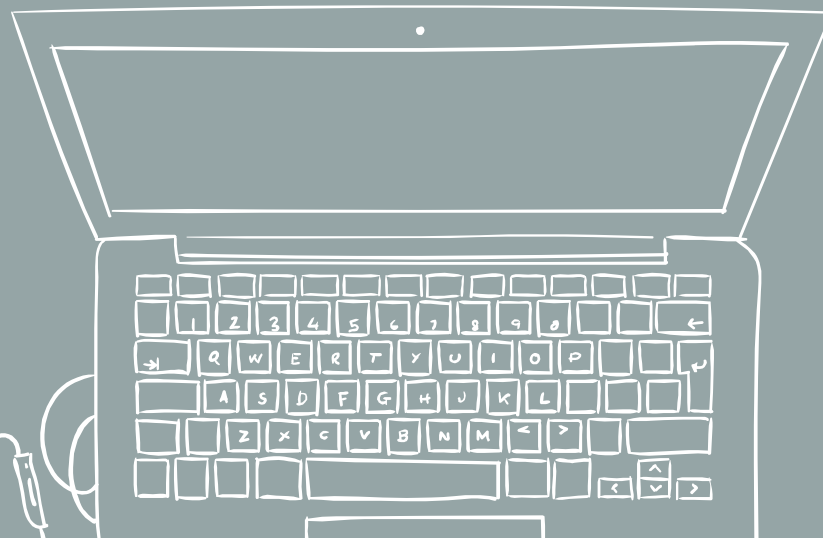
- ✖ Use your developed search methods to search relevant databases
- ✖ Make note of subject headings and keywords in relevant articles
- ✖ Use RefWorks to manage resources you want to refer back to
- ✖ Use Web of Science to track citations for important work in the field



WRITE N CITE



LIBGUIDE





THANKS!

Any questions?

You can find me at:

jcrossfieldmcintosh@otterbein.edu

614.823.1366



WHY USE IT?

- ✘ It is very helpful for arranging and managing resources and citations.
- ✘ RefWorks is available anywhere there is internet.
- ✘ You don't have to worry about backing up your citations and research because RefWorks will back itself up.
- ✘ It will make your life easier by creating citations and bibliographies
- ✘ In short, RefWorks is free, portable, and highly useful!
- ✘ You will have access to your account as long as Otterbein maintains subscription.



WORKSHOPS

Humanities
or Sciences:
Workshop by
discipline

Citation
Management
Tools

Research
Tips and
Strategies

Other suggestions?